

**Acoustic Window****Noise Control****R<sub>w,P</sub> 60 dB****in accordance with DIN EN ISO 10140-2****\* Glazing Type****Fire protection F30, F60, F90  
Anti-vandal P4A up to P7B  
Bullet proof BR1 up to BR7****\* Flush Optic****Range of Dimensions:****Width from 400 mm to 4000 mm  
Height from 400 mm to 2000 mm****(\* special options )****Technical specification and text for invitation to tender****Product:****SFB acoustic window brand Buchele in accordance with  
DIN EN ISO 10140-2****Window Type:****SFB 60****Noise control R<sub>w,P</sub>****60 dB****Dimension:****.... x .... Mm****Frame:**

Four-sided circumferential folded two part closed frame adjusted to thickness of wall, with removable glass holding frames made of flat-bar steel are put on both sides.  
Complete edge damping individually adapted to the wall thickness made of matte black coated perforated metal sheet with mineral fiber lining.  
The edge damping is invisible attached to the frame so that no disturbing elements will interfere with the even optic of the edge damping.  
On request the edge damping may be coated in various RAL colours.

**Glazing:**

Two acoustical separated vertical mounted single glass sheets made of safety glass fixed in two-sided sponge rubber in the frame..

**Surface:**

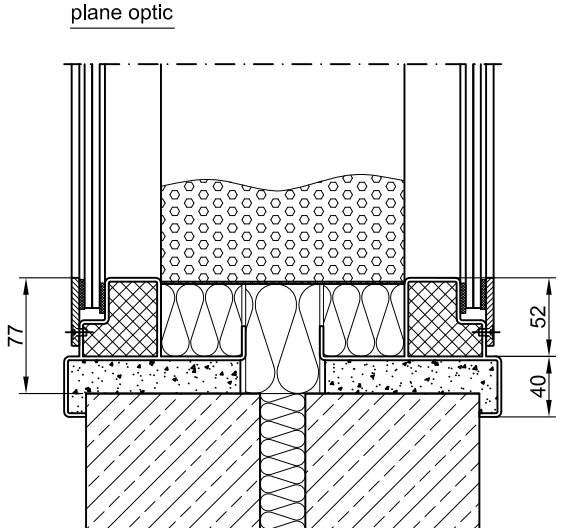
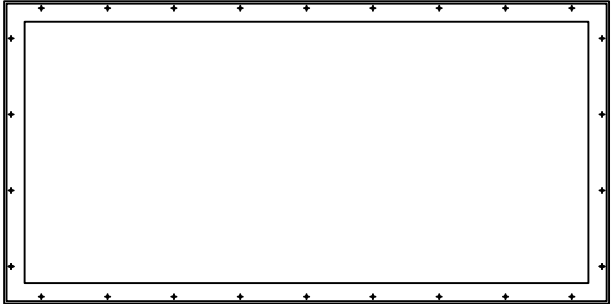
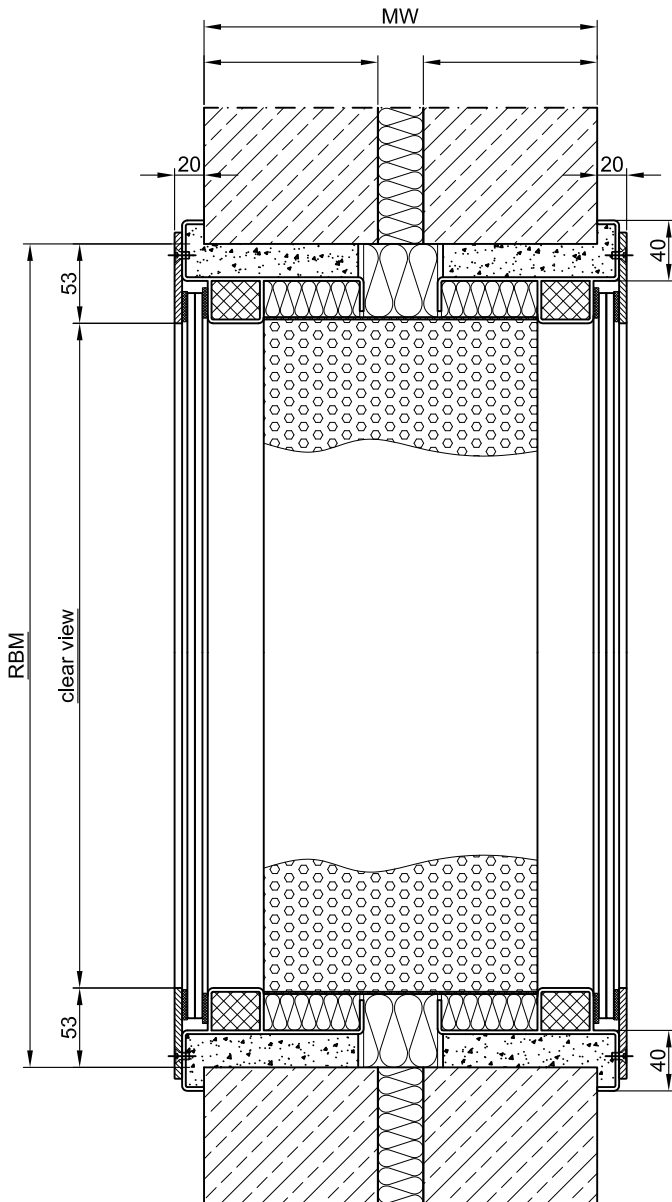
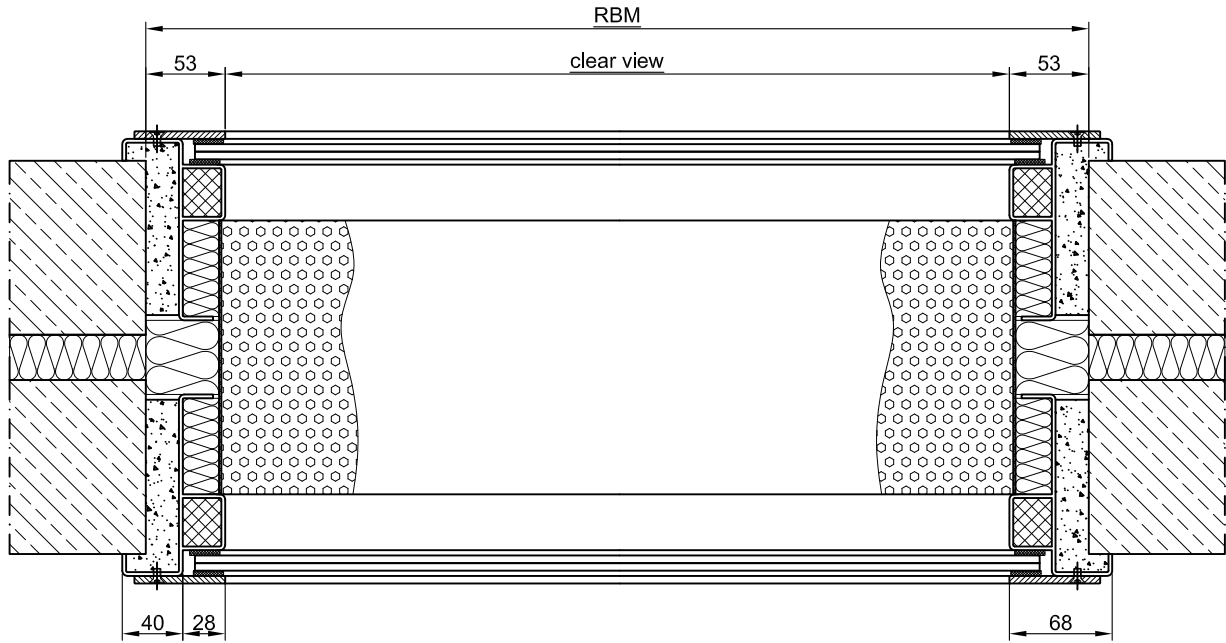
Frame and glass bars galvanized and primed with one component Primer similar RAL 7001.

**Mounting:**

Delivery and professional assembly including filling of the cavities in the frame with mortar of group III.

**Special Models****Glazing Types:**

Fire proof glazing F30, F60, F90  
Anti-vandal P4A up to P7B safety glazing  
Bullet proof BR1 up to BR7 safety glazing  
Installation of anti-reflective glazing  
Installation of glazing in V- or A-shape



technische Änderungen vorbehalten - Stand 01/17