

Double Wing T 30 Fire Retardant Steel Sliding Gate**Fire Protection** **T30** **certified in accordance with DIN 4102**

- * Glazing
- * Pedestrian door
- * Stainless steel

Range of Dimensions: **Width from 2000 mm to 8500 mm**
Height from 2000 mm to 6000 mm
(doors below 1500 mm width not higher than 2500 mm)

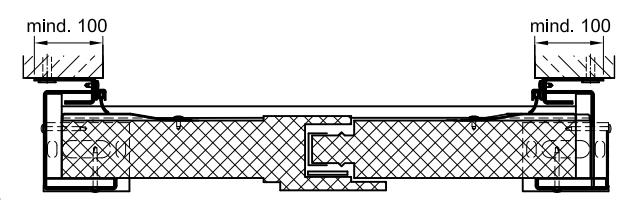
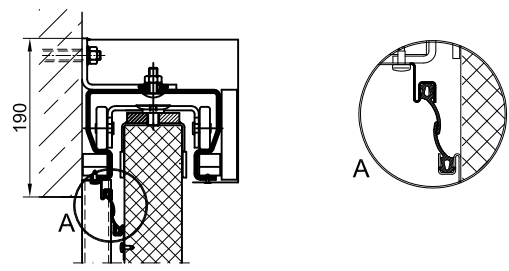
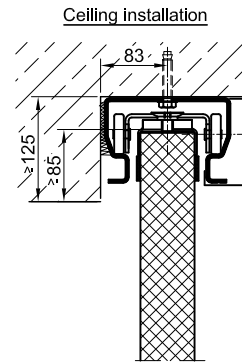
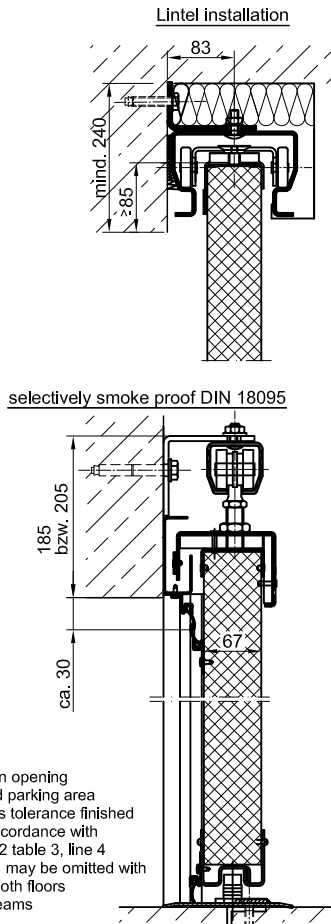
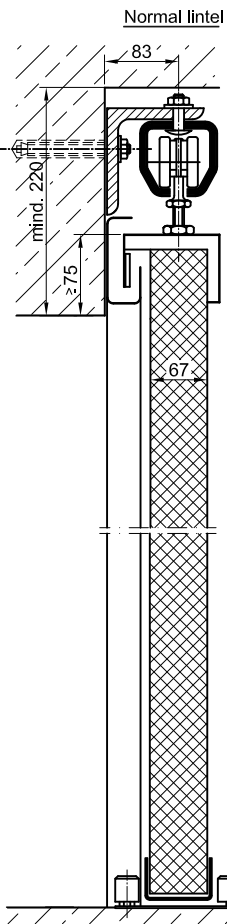
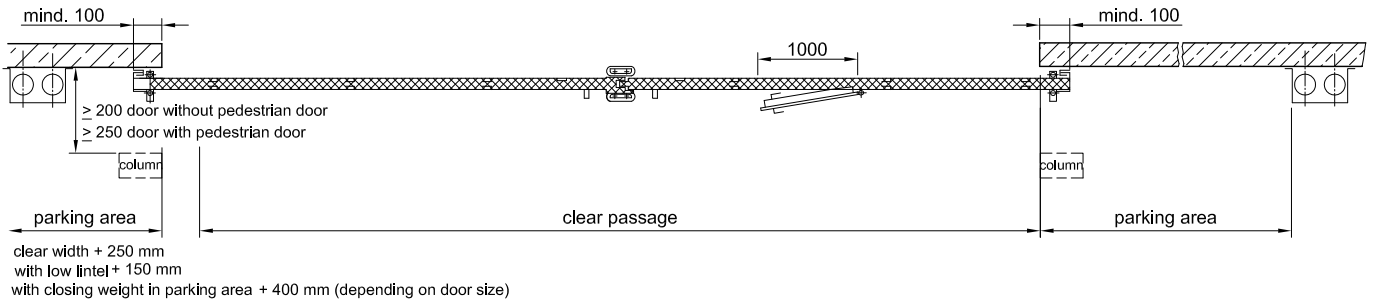
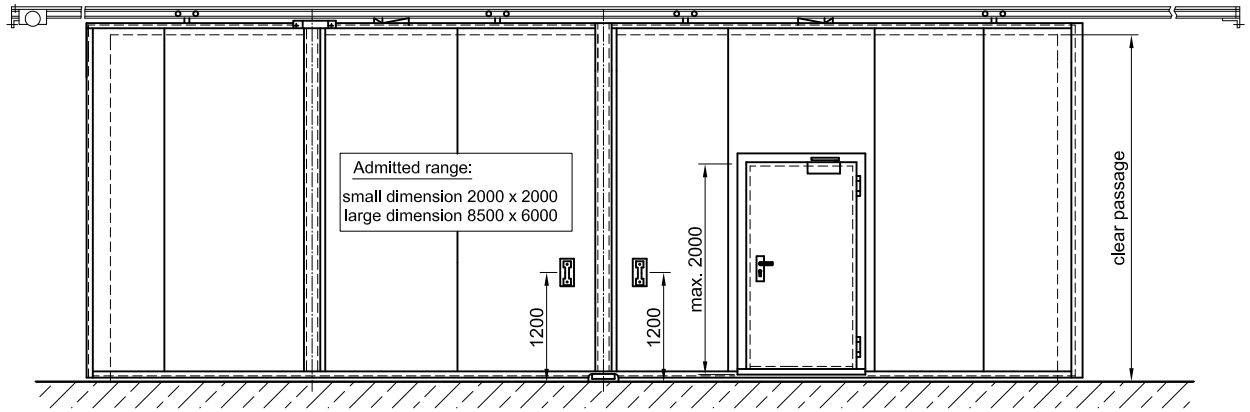
* (possible special options)

Technical specification and text for invitation to tender

Product:	T30-2 double wing fire retardant steel sliding gate brand Buchele in accordance with DIN 4102	
Door Type:	T30-2 ST	
Dimensions: x mm	
Door leaf:	Consisting of basic elements (number according to opening width), 67 mm thick, of 1,0 mm sheet metal edged Overlapping on sides minimum of. 100 mm, Top min. 75 mm (low lintel min. 85 mm).	
Frame:	3-sided pressed maze seal with 2 piece door guidance shoes beyond passage way.	
Fitting:	The door leaf has a shell handle on each side. The drive consists of one double paired ball bearing cam roller per element running in a helmet rail. The door closes automatically by counterweight in the sheet metal cover. To achieve an even closing each door leaf has a radial damper and to minimize the impact when opening or closing a hydraulic damper per leaf.	
Surface:	Door leaf and frame galvanized (Primed on additional charges).	
Installation:	in brick wall	≥ 240 mm
	in concrete	≥ 140 mm
	in gas concrete	≥ 240 mm

Special Options

Glazing:	Fire protection glazing F30, minimum frieze width per panel. 3-sided 190 mm, base height 1150 mm, but max. 450 x 1100 mm.
Pedestrian door:	Max. dimensions 1000 x 2000 mm (without sill). Can only be done on a door width over 1500 mm and a height over 2100 mm.
Stainless steel design:	Material 1.4301 (V2A) res. 1.4571 (V4A), Surface brushed and rotary matte finished.



Floor sill in opening range and parking area
Planeness tolerance finished floor in accordance with DIN 18202 table 3, line 4
Floor seal may be omitted with even smooth floors without seams

technische Änderungen vorbehalten - Stand 01/17