

Single Wing T 90 Fire Resistant Security Steel Door

Fire Protection	T90	in accordance with DIN 4102
Burglar Proof	RC2/RC3/RC4	in accordance with DIN V ENV 1627

* Smoke Control	RS (S _m)	in accordance with DIN 18095
* Noise Control	up to R _w 45 dB	in accordance with DIN 52210
* Stainless steel		

Range of Dimensions: **Width from 625 mm to 1500 mm**
Height from 1750 mm to 3250 mm

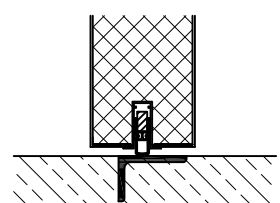
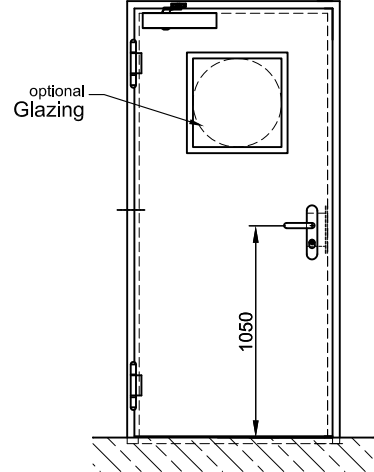
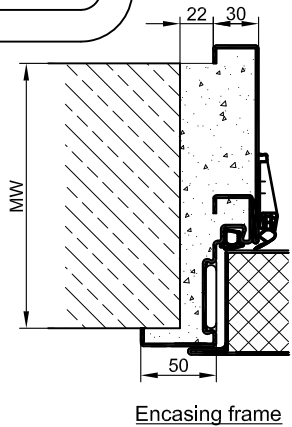
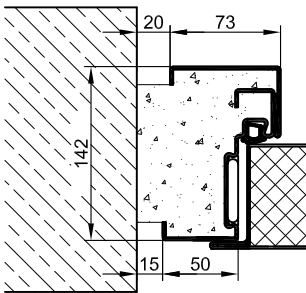
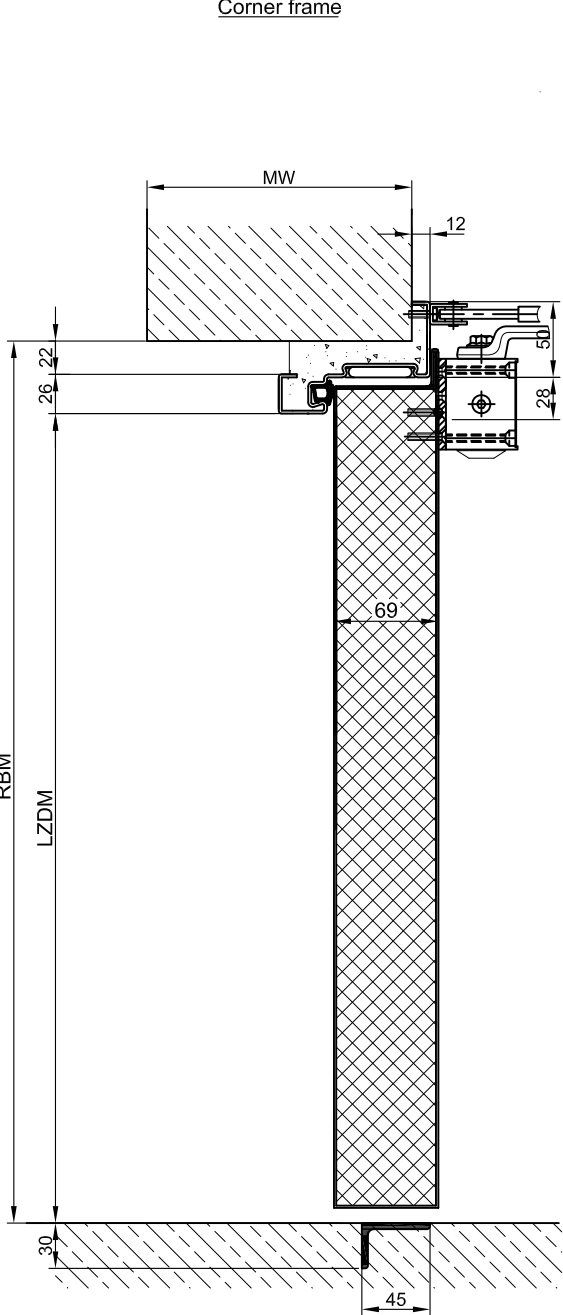
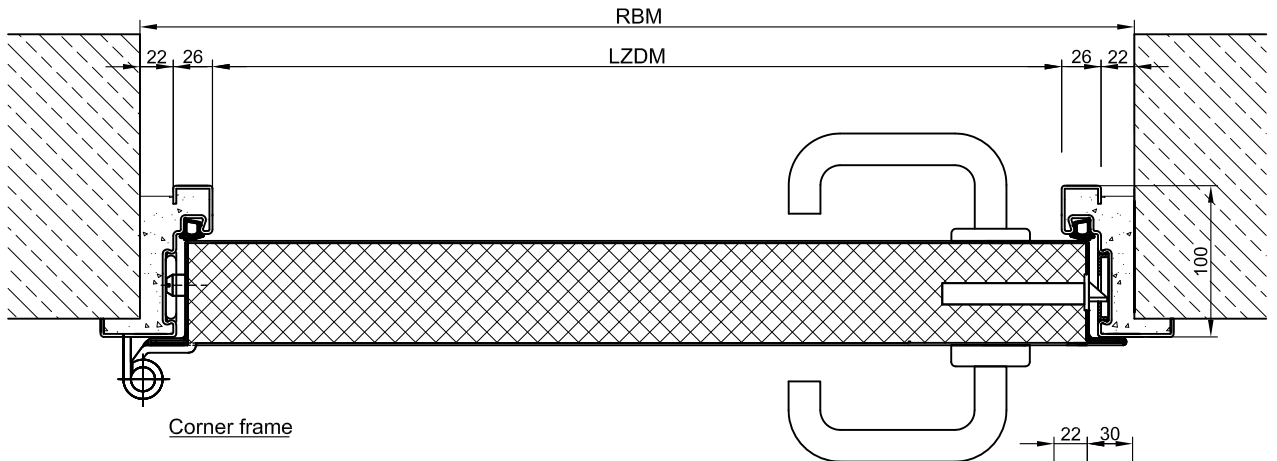
* (special options see back of this page)

Technical specification and text for invitation to tender

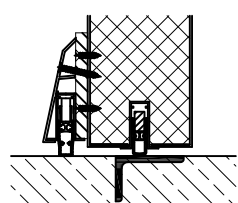
Product:	T90-1 single wing fire resistant steel door brand Buchele In accordance with DIN 4102	
Door Type:	T90-1 TSN-11 (System Schröders)	
Burglar Proof:	RC	
Dimensions: x mm	
Door Leaf:	Double walled, level 69 mm thick steel door leaf without hinge embossing, three sides folded with thin rebate without bottom stop. Special insulating inserts completely laid in and glued. Safety bolt screwed in door leaf fold.	
Sill:	Floor bracket as separation bar. Surface galvanized and welded to the frame.	
Frame:	3-sided circumferential folded corner frame with visible black coated intumescent material in fold. Sealing profile adjustable fixed in the three sided groove.	
Hinges:	Threepart height-adjustable construction hinges with hinge pin retention and ball-bearing spacer ring for smooth door movement.	
Door Closer:	Standard arm door closer according to DIN EN 1154 silver colored mounted on hinge side.	
Fitting:	2-point safety locking system with latch lever function in accordance with DIN EN 12209 (prepared for installation of a profile cylinder lock provided by customer). Safety door handle set with DIN EN 18257 firmly installed turnable aluminium F1 in U-shape with rounded protective plate.	
Surface:	Door leaf and frame galvanized and primed with one component primer similar RAL 7001.	
Mounting:	Delivery and professional assembly including filling of the cavities in the frame with mortar of group III.	
Installation:	in brick wall	≥ 240 mm
	in concrete	≥ 140 mm

Special Models

Smoke Protection:	Drop seal or stop sill.
Sound Insulation:	Drop seal or stop sill.
Glazing:	F90 Fire protection glass, held by steel glass bars minimum frieze width circumferential 130 mm. max. glass size 940 x 1900 mm.
Stainless Steel:	Material 1.4301 (V2A) or. 1.4571 (V4A), Surface bright mill, brushed or mattet



Noise control $R_w = 35 \text{ dB}$



Noise control $R_w = 43 \text{ dB}$