

## Double Wing Multi Purpose Steel Door

* Plane Optic		
* Noise Control	up to Rw 46 dB	in accordance with DIN EN ISO 10140-2
* Burglar Proof	RC2/RC3/RC4	in accordance with DIN EN 1627
* Shot Proof	FB4	in accordance with DIN EN 1522
* Air Tight	up to classification 4	in accordance with DIN EN 12207
* Rain and Fire Water Tight	Classification 6A	in accordance with DIN EN 1027
* Wind Tight	Classification C5	in accordance with DIN EN 12211
* Pressure Resistant	up to 5 kPa	
* Explosion Protection	up to zone 1/21	in acc. with DIN EN 1127-1 or ATEX 94/9/EG
* Glazing		
* Top Panel / Top Light		
* Ventilation Grille		
* Stainless Steel		

Range of Dimensions:                              **Width from 1000 mm to 5000 mm**  
   **Height from 500 mm to 5000 mm**

\* (special options see back of this page)

## Technical specification and text for invitation to tender

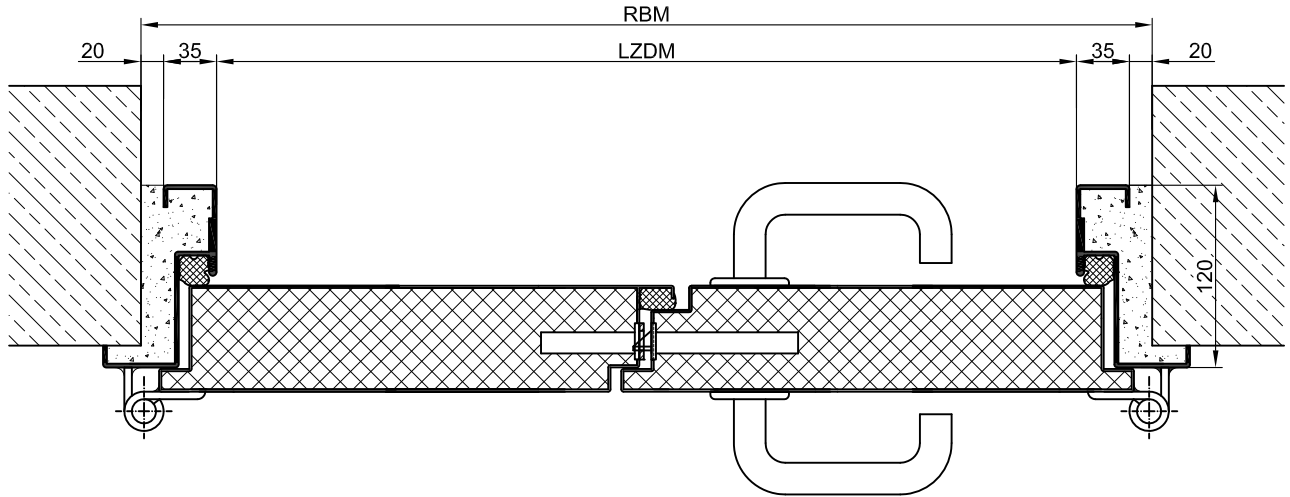
<b>Product:</b>	PL 2 double wing purpose steel door brand Buchele
<b>Door Type:</b>	PLANE Line PL 2 BASIC
<b>Dimension:</b>	.... x .... mm
<b>Door Leaf:</b>	Double walled, level 70 mm thick steel door leaf without hinge embossing, three sides folded with thick rebate without bottom stop. Special insulating inserts completely laid in and glued.
<b>Sill:</b>	Floor bracket as separation bar. Surface galvanized and welded to the frame.
<b>Frame:</b>	3-sided circumferential folded corner frame with high-quality multi-chamber sealing profile adjustable fixed in the three sided groove.
<b>Hinges:</b>	Threepart height-adjustable construction hinges with hinge pin retention and ball-bearing spacer ring for smooth door movement.
<b>Fitting:</b>	<b>Active door leaf</b> with mortice lock with latch lever function in accordance with DIN EN 12209 (prepared for installation of a profile cylinder lock provided by customer). Door handle set in accordance with DIN EN 1906 firmly installed turnable synthetic material black in U-shape with rounded short-plate. <b>Inactive door leaf</b> with espagnolette bolt lock in the central rebate profile.
<b><u>Type PLANE Line PL 2 PREMIUM</u></b>	
<b>Frame:</b>	Three sided circumferential folded PLANE Line special corner frame for flush mounted optics on hinge side. With visible black coated intumescent material in fold. High-quality multi-chamber sealing profile adjustable fixed in the three sided groove.
<b>Hinges:</b>	Object hinges type VB-3D 160 adjustable in three dimensions. Reception element with internal positioned slide bearings for smooth door movement.

**Type PLANE Line PL 2 SUPERIOR**

<b>Frame:</b>	Three sided circumferential folded PLANE Line special corner frame for flush mounted optics on hinge side. With visible black coated intumescent material in fold. High-quality multi-chamber sealing profile adjustable fixed in the three sided groove.
<b>Hinges:</b>	Concealed hinge system adjustable in three dimensions.
<b>Surface:</b>	Door leaf and frame galvanized and primed with one component primer similar RAL 7001.
<b>Mounting:</b>	Delivery and professional assembly including filling of the cavities in the frame with mortar of group III.

**Special Models**

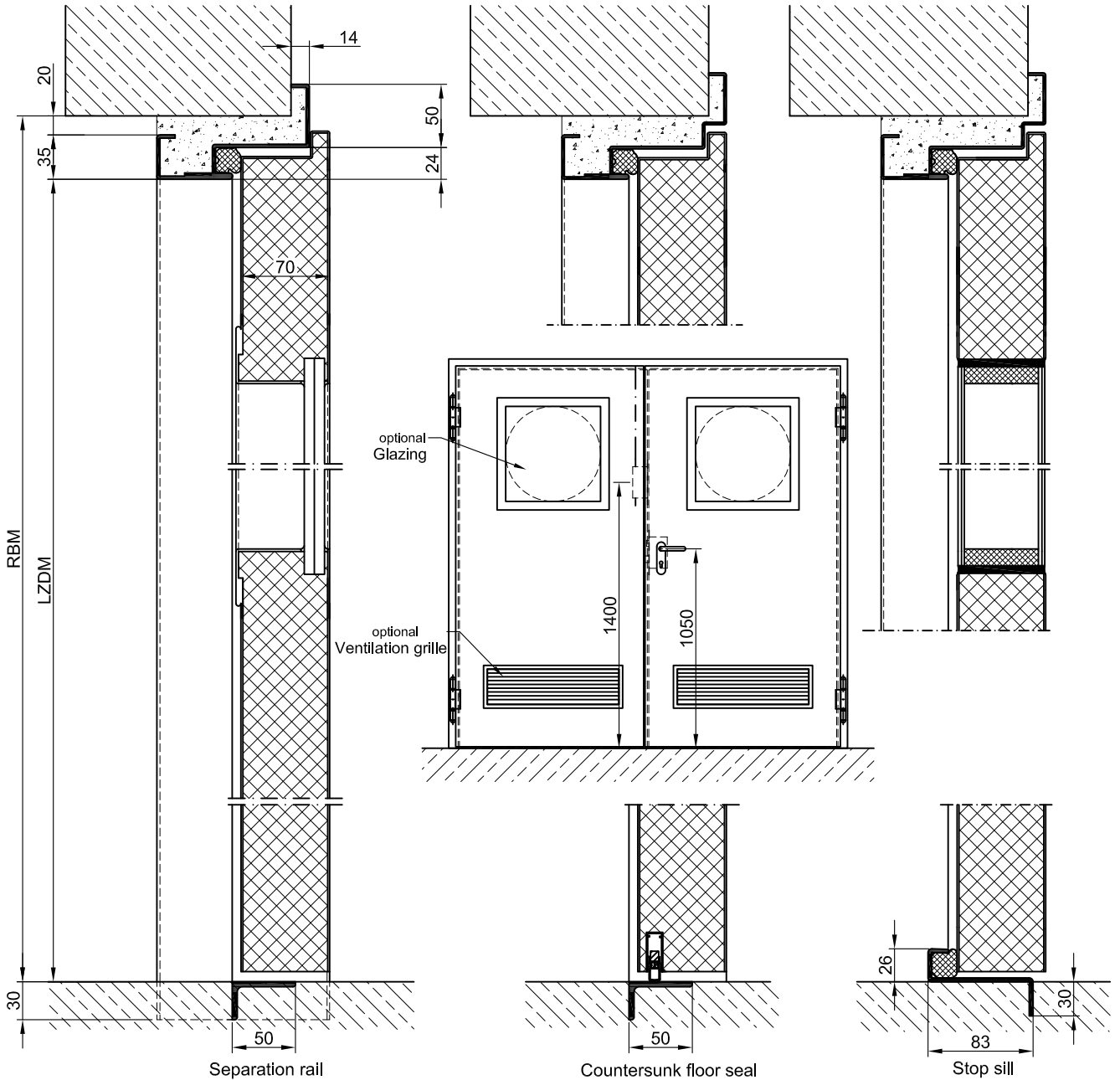
<b>Flush Glazing:</b>	<b>PLANE Line</b> special glazing flush with outer edge of door leaf on hinge side and opposite of hinge side. Edge enameling and permanent elastic glazing joint in color black RAL 9004. Minimum frieze width 125 mm side and top, base 300 mm.
<b>Standard Glazing:</b>	Glazing held by profiled and visibly screwed steel glazing bars. Minimum frieze width 125 mm side and top, base 300 mm.
<b>Sound Insulation:</b>	Drop seal or stop sill.
<b>Burglary Protection:</b>	RC 2, RC 3 or RC 4 safety package with safety fitting.
<b>Bullet Proof:</b>	FB 4-NS special inlay in door leaf and frame.
<b>Airtight:</b>	High-quality multi-chamber sealing profile adjustable fixed in the three sided groove of the frame in connection with a drop seal or a stop seal.
<b>Driving Rain Water tight:</b>	High-quality multi-chamber sealing profile adjustable fixed in the three sided groove of the frame in connection with a drop seal or a stop seal.
<b>Windproof</b>	High-quality multi-chamber sealing profile adjustable fixed in the three sided groove of the frame in connection with a drop seal or a stop seal
<b>Top Panel / Top Light:</b>	Top panel built like door leaf Top light with solid glazing (glazing type optional)
<b>Ventilation Grille:</b>	Slanted segments in profile frame (standard) Poke protected slanted double segments in profile frame
<b>Stainless Steel:</b>	Material 1.4301 (V2A) or. 1.4571 (V4A), Surface bright mill, brushed or mattet



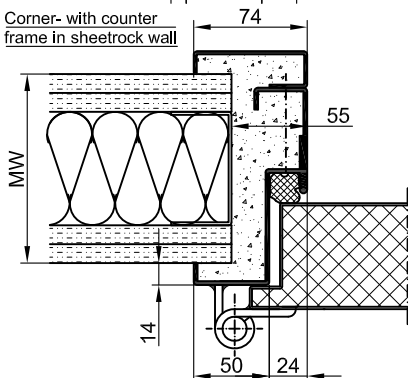
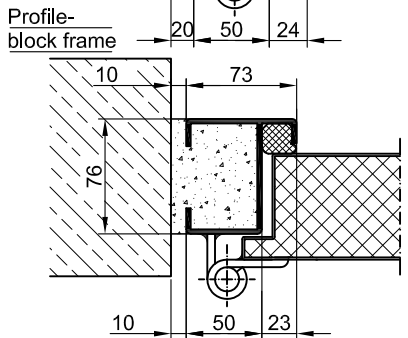
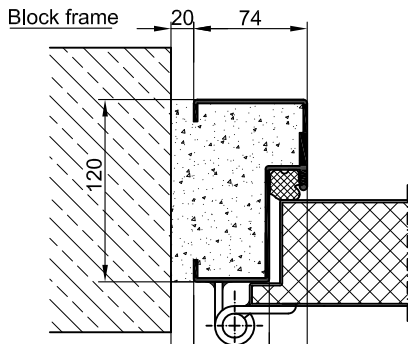
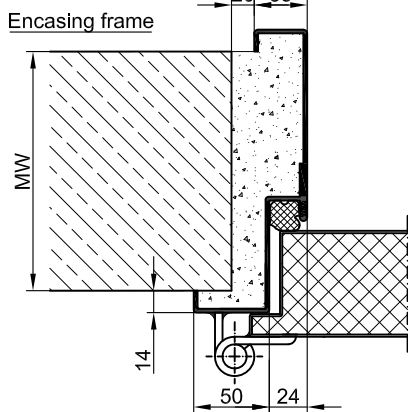
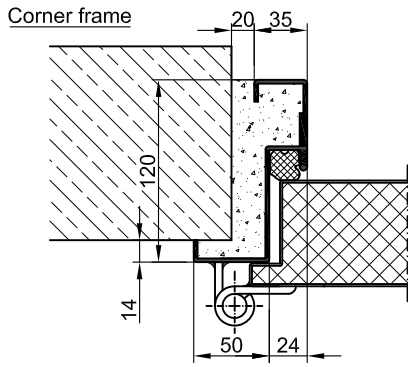
BASIC

PREMIUM

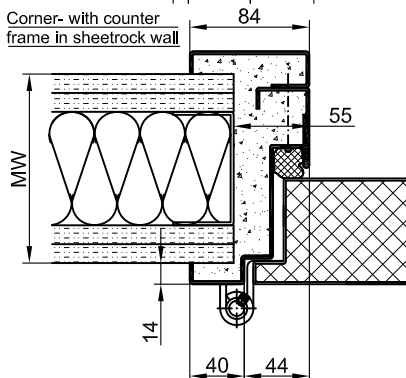
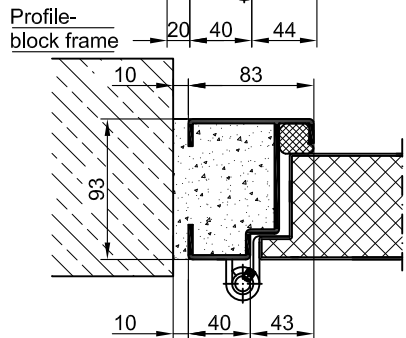
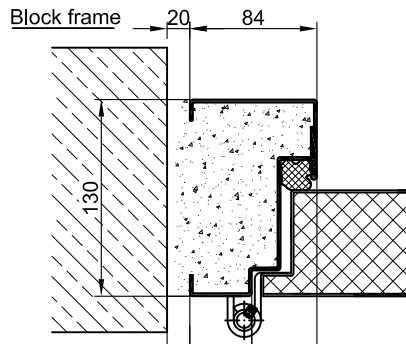
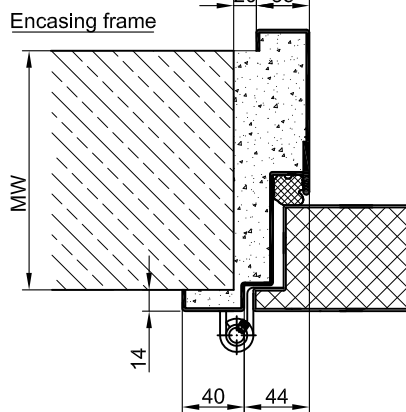
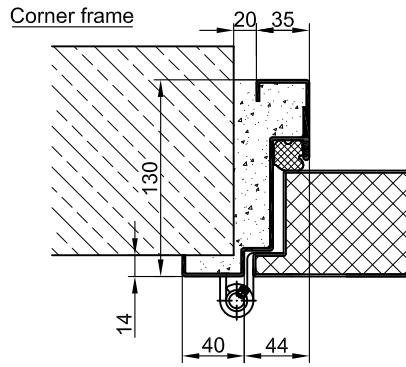
SUPERIOR



**BASIC**



**PREMIUM**



**SUPERIOR**

