



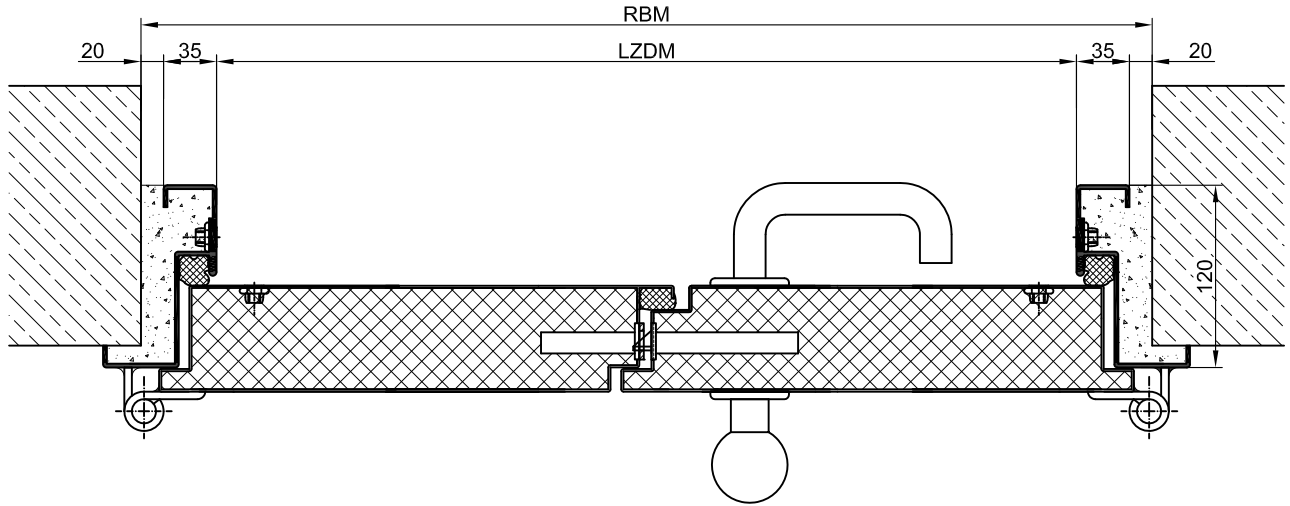
element with internal positioned slide bearings for smooth door movement.

**Type PLANE Line PL 2 SUPERIOR**

<b>Frame:</b>	Three sided circumferential folded PLANE Line special corner frame for flush mounted optics on hinge side. With visible black coated intumescent material in fold. High-quality multi-chamber sealing profile adjustable fixed in the three sided groove.
<b>Hinges:</b>	Concealed hinge system adjustable in three dimensions.
<b>Surface:</b>	Door leaf and frame galvanized and primed with one component primer similar RAL 7001.
<b>Mounting:</b>	Delivery and professional assembly including filling of the cavities in the frame with mortar of group III.

**Special Models**

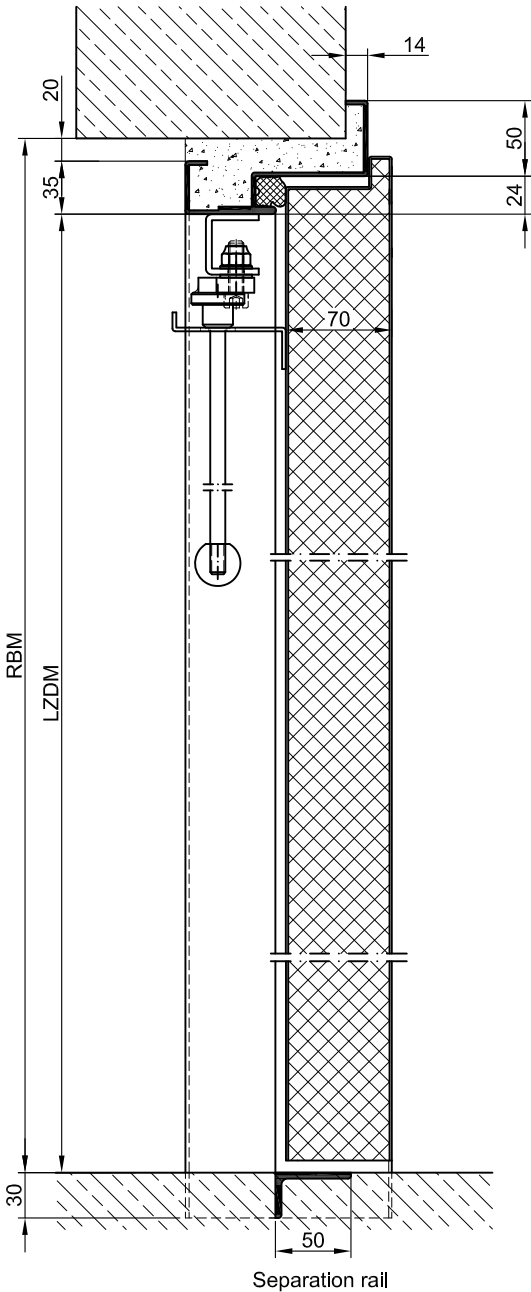
<b>Door Holder:</b>	Buchele door holder mounted on lintel opposite of hinge side. When door opens 90 ° it automatically locks. Locking can be released by push rod.
<b>Panic Lock:</b>	Switch function B, forced locking function C, passing function D
<b>Burglary Protection:</b>	RC 2, RC 3, RC 4 or RC 5 safety package with safety fitting.
<b>Driving Rain Water tight:</b>	High-quality multi-chamber sealing profile adjustable fixed in the three sided groove of the frame in connection with a drop seal or a stop seal.
<b>Top Panel / Top Light:</b>	Top panel built like door leaf Top light with solid glazing (glazing type optional)
<b>Stainless Steel:</b>	Material 1.4301 (V2A) or. 1.4571 (V4A), Surface bright mill, brushed or mattet



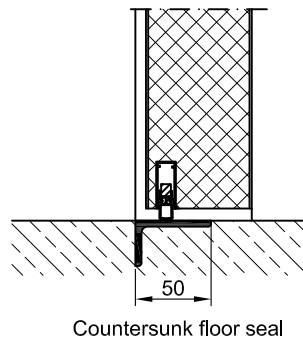
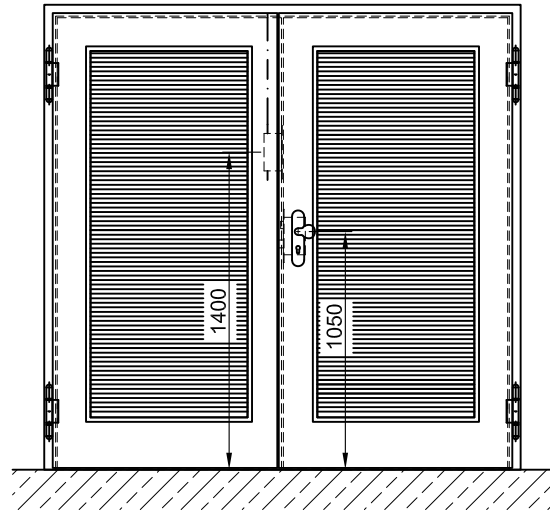
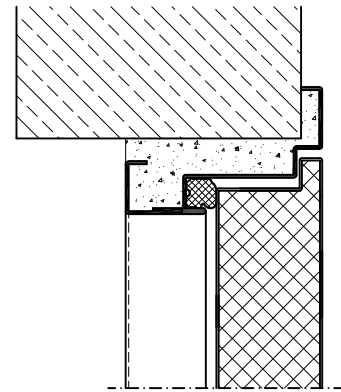
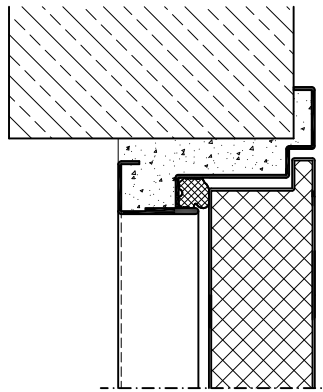
BASIC

PREMIUM

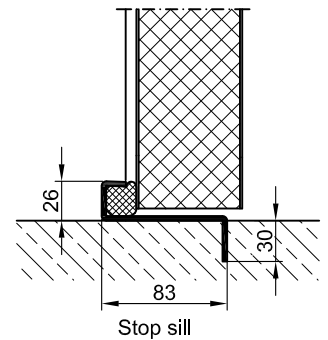
SUPERIOR



Separation rail

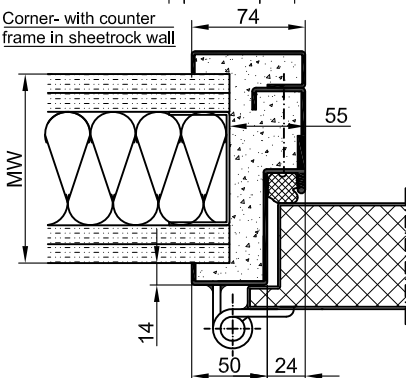
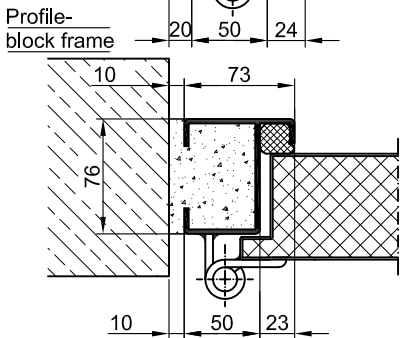
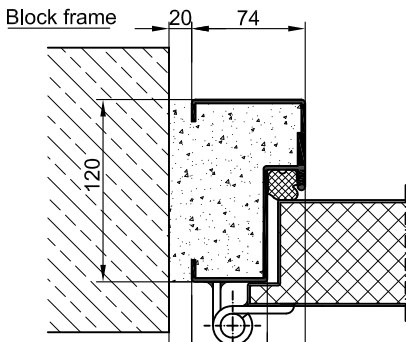
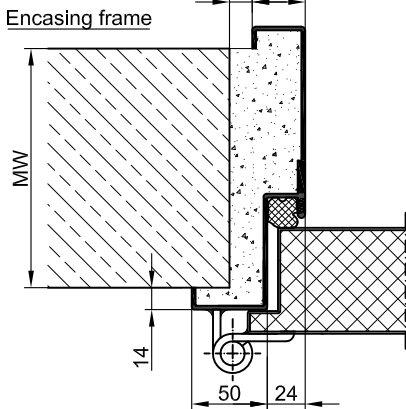
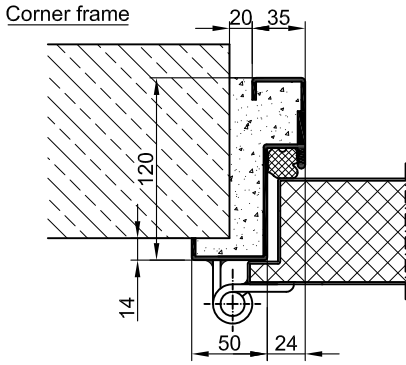


Countersunk floor seal

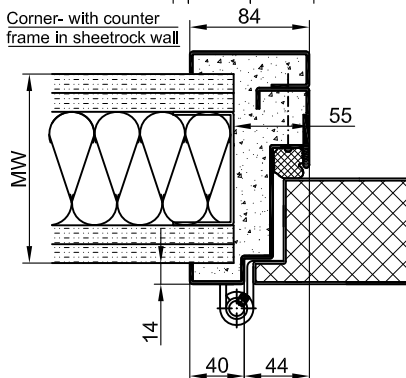
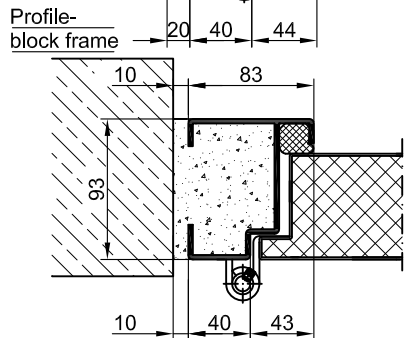
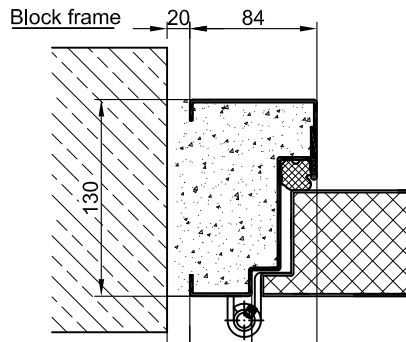
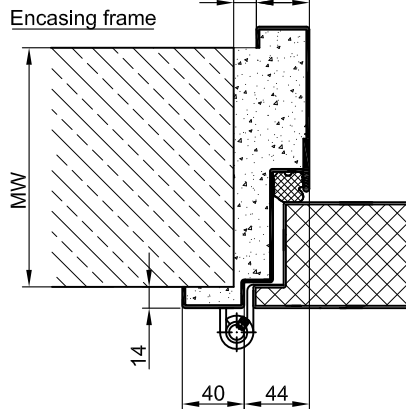
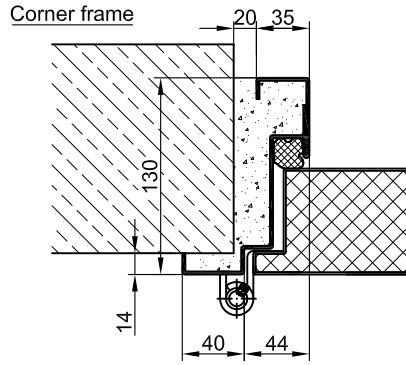


Stop sill

**BASIC**



**PREMIUM**



**SUPERIOR**

