

## Acoustic Window

**Sound Insulation****R<sub>w,P</sub> 58 dB****tested acc. to EN ISO 10140-2**

### Optional Audited Additional Functions

- Fire Protection	EI <sub>230</sub> / F30 to EI <sub>290</sub> / F90	tested acc. to EN 1363-1
- Burglar Protection	RC2 / RC3 / RC4	tested acc. to EN 1627
- Impact Resistance	P1A to P5A	tested acc. to EN 356
- Penetration Resistance	P6B to P8B	tested acc. to EN 1063
- Bullet Resistance	FB4-NS to FB7-NS	tested acc. to EN 1522
	BR1-NS to BR7-NS	tested acc. to EN 1063
- Blast Resistance	up to 20 kPa	tested acc. to EN 13124-1
- Explosion Resistance	ER1-NS to ER4-NS	tested acc. to EN 1522
- Explosion Protection	up to zone 1/21	acc. to EN 1127-1 or ATEX 2014/34/EU

### Range of Dimension

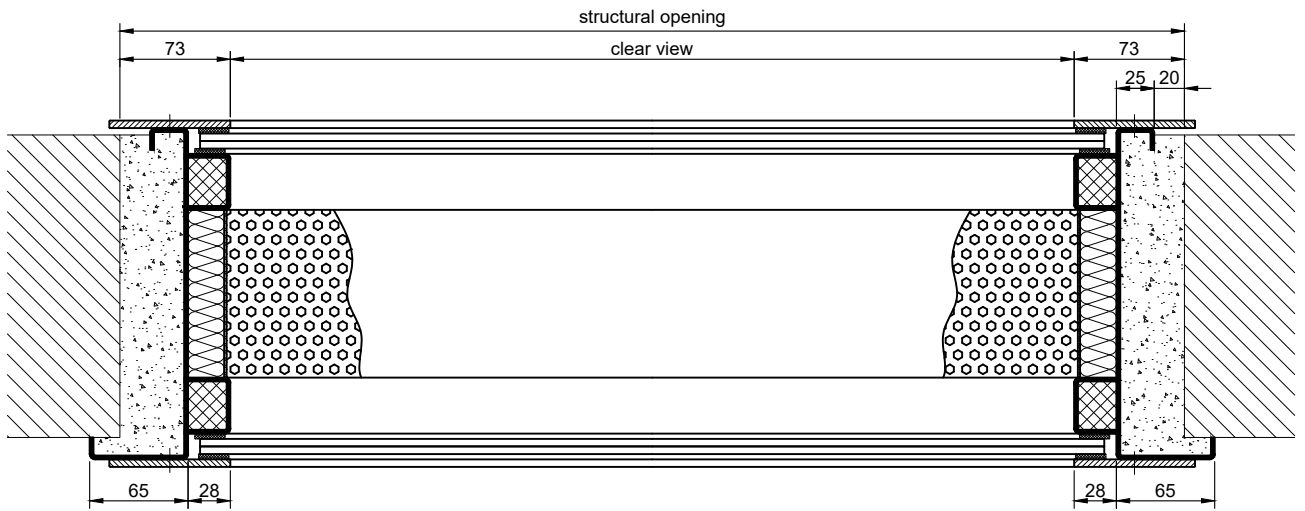
**Width from 400 mm to 4000 mm****Height from 400 mm to 2000 mm**

### Technical Specification and Tender Text

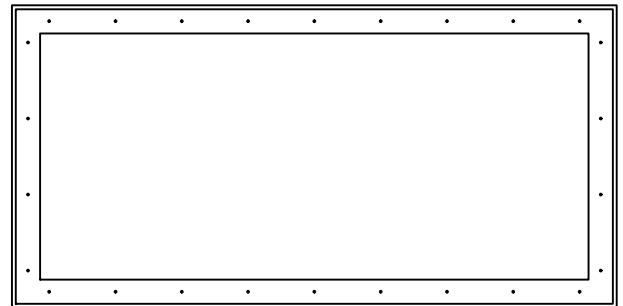
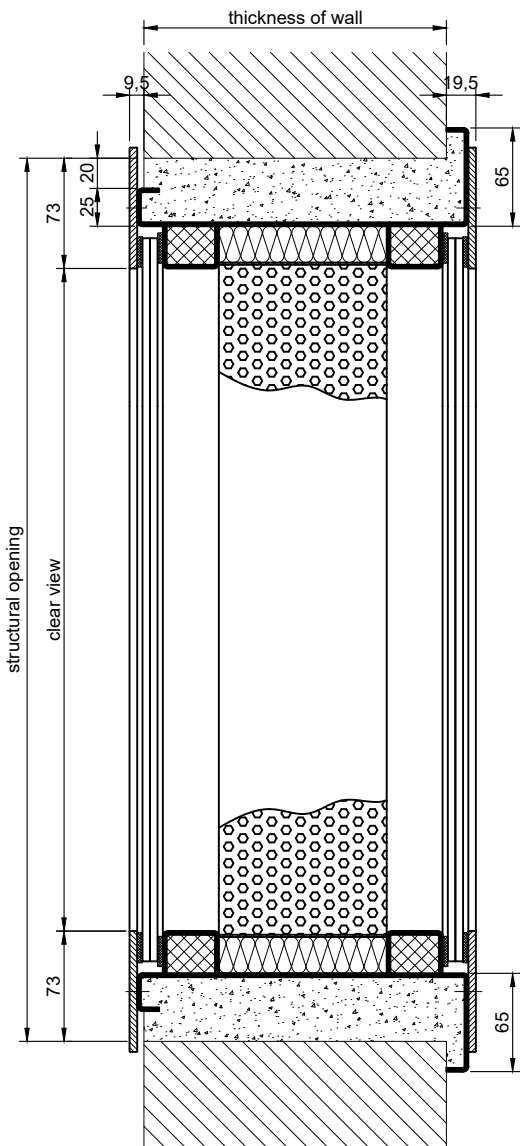
<b>Product:</b>	<b>SFB acoustic window</b> <b>brand Buchele tested acc. to EN ISO 10140-2</b>
<b>Window Type:</b>	<b>SFB 58</b>
<b>Sound Insulation R<sub>w,P</sub></b>	<b>58 dB</b>
<b>Structural Opening:</b>	<b>.... x .... mm</b>
<b>Frame:</b>	4-sided circumferential rebated, one-piece encasing frame adapted to the wall thickness with visibly screwed glazing frames attached on both sides. With full-surface edge damping individually adapted to the wall thickness made of matt black coated perforated sheet with mineral fibre lining. The edge damping is fixed invisibly in the frame so that no visually disturbing elements affect the uniform appearance of the edge damping. On request, the visible area between the glazing can also be coated in other RAL colours.
<b>Glazing:</b>	Two acoustically separated, vertically mounted individual panes of laminated safety glass fixed in the frame in a double-sided foam rubber bed.
<b>Surface:</b>	Frame and glazing beads galvanized and coated with 2K-PUR primer (Very High Solid) similar to RAL 7035.

### Supplementary Equipment

<b>Glazing Variants:</b>	Glazing angled in A-shape Glazing angled in V-shape
<b>Glazing Types:</b>	Installation of non-reflective glass Installation of white glass
<b>BUCHELE DELUXE:</b>	The exclusive surface coating.



enacising frame



flush mounted

